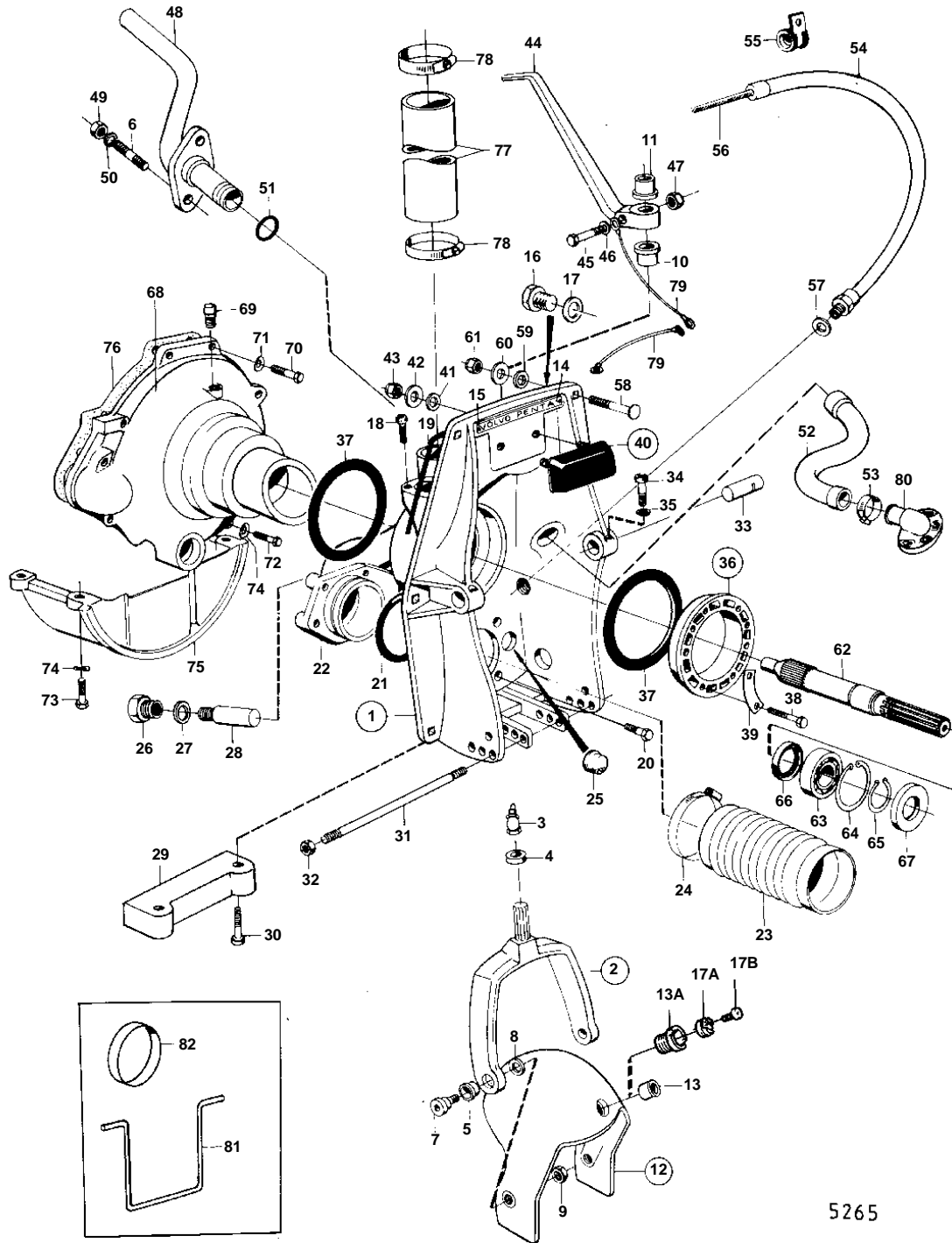


AQ165A, AQ170A



5265

## AQ165A, AQ170A

REF	PART NO.	QTY	DESCRIPTION	NOTES
1		1	SHIELD	REPLACED BY 1EA 875671, 1EA 851265, 1EA 851263, 2EA 941807, 1EA 875531, 1EA 839459, 1EA 940097, 1EA 955537.
	875532	1	Tensioning ring	FOR STEERING YOKE AND LEVER WITH SPLINES., REPLACED BY 1EA 875671 1EA 851265 1EA 851263 2EA 941807., MOXXXX/80275-XXXX/187079
	875671	1	Shield	MOXXXX/187080-
2		1	• STEERING YOKE	EARLY TYPE STEERING YOKE AND LEVER WITHOUT SPLINES, REPLACED BY 1EA 839377, 1EA 832587, 1EA 832586, 1EA 940162
	839377	1	• Steering yoke	FOR STEERING YOKE AND LEVER WITH SPLINES.
3	914169	1	• • Lubricating nipple	
4	814359	1	• • Ring	
5		2	• • Bushing	EARLY TYPE
	814640	2	• • Bushing	LATE TYPE
6	941872	2	• Stud	
7	897798	2	• Shoulder screw	
8	897244	2	• Washer	
9	943152	2	• Nut	
10	897731	2	• Bushing	EARLY TYPE STEERING YOKE AND LEVER WITHOUT SPLINES, REPLACED BY 1EA 839377, 1EA 832587, 1EA 832586, 1EA 940162
	897731	1	• Bushing	FOR STEERING YOKE AND LEVER WITH SPLINES., LOWER
11		1	• Bushing	FOR STEERING YOKE AND LEVER WITH SPLINES., UPPER
12	814684	1	• Protective helmet	MO-XXXX/187079
	851267	1	• Protective helmet	MOXXXX/187080-
13		1	• • Bushing	FOR 1/2"- 13UNC SCREW.
13A	851262	1	• • Bushing	FOR BEARING PIN WITH 2 BOLTS.
14	832608	1	• Plate	
15	804269	2	• Drive screw	
16		1	• Plug	MOXXXX/94050-
17	897745	1	• Gasket	MOXXXX/94050-
17A	852705	1	Pivot pin, BEARING TAP	(851263)
17				MOXXXX/187080-
17B	941807	2	Hex. socket screw	MOXXXX/187080-
18	956568	2	Hex. socket screw	SEE GROUP 9
19	897726	1	Sealing strip	
20	959967	4	Hexagon screw	
21	925256	1	O-ring	
22		1	Hull fitting	
23	897631	1	Exhaust bellows	
24	961675	2	Hose clamp	
25	814473	1	Rubber plug	
26		1	Plug	
27	897745	1	Gasket	
28		1	ZINK ELECTRODE	EARLY TYPE REPLACED BY 1EA 832598, 2EA 959438.
29	832598	1	Zinc anode	
30	959438	2	Hex. socket screw	
31	814301	1	Adjusting pin	
32	814357	2	Flange nut	
33	897831	2	Pivot pin	
34	941873	2	Hex. socket screw	
35	941670	2	Washer	
36	806310	1	Mounting kit	
37	804190	2	• Rubber ring	
38	191844	6	• Hexagon screw	
39	806624	3	• Striker plate	
40	875379	1	Rubber cushion	
41	832565	2	• Gasket	
42	960142	2	• Washer	
43	950364	2	• Lock nut	
44		1	Spindle arm	EARLY TYPE STEERING YOKE AND LEVER WITH SPLINES.
		1	Spindle arm	FOR STEERING YOKE AND LEVER WITH SPLINES.
45		1	Screw	EARLY TYPE STEERING YOKE AND LEVER WITH SPLINES.
	940162	1	Hexagon screw	FOR STEERING YOKE AND LEVER WITH SPLINES.
	955536	1	Hexagon screw	LATE TYPE WITH GROUND CABLE ON STEERING LEVER.

## AQ165A, AQ170A

REF	PART NO.	QTY	DESCRIPTION	NOTES
46	940097	1	Washer	LATE TYPE WITH GROUND CABLE ON STEERING LEVER.
47	950386	1	Lock nut	EARLY TYPE STEERING YOKE AND LEVER WITH SPLINES.
48	831111	1	Grommet	SEE GROUP 2B
49	950352	2	Lock nut	
50	955893	2	Washer	
51	925063	1	O-ring	
52		1	Hose	
53	961668	2	Hose clamp	
54	839091	1	Protecting hose	
55	952635	1	Clamp	
56		X	CONTROL CABLE	SEE GROUP 9
57	897745	1	Gasket	
58	943426	6	Screw	
59	850418	6	O-ring	(814166)
60	190878	6	Washer	
61	940176	6	Hexagon nut	
62		1	PRIMARY SHAFT	REPLACED BY 1EA 832941 1EA 832439., MO-XXXX/62358
	832941	1	Spindle	MOXXXX/62359-
63	19258	1	Ball bearing	D = 55 MM MO-XXXX/62358
	11013	1	Ball bearing	D = 62 MM MOXXXX/62359-
64	914530	2	Snap ring	
65	914462	1	Snap ring	
66	946242	1	Sealing ring	
67	946242	1	Sealing ring	
68		1	FLYWHEEL HOUSING	REPLACED BY 1EA 831619, 1EA 832941, 1EA 11013, 1EA 958860 , 2EA 914533., MO-XXXX/62358
		1	Flywheel housing	MOXXXX/62359-
69		1	Lubricator	
70	940160	2	Hexagon screw	L = 38 MM EARLY TYPE
	955549	2	Hexagon screw	L = 45 MM EARLY TYPE
	940160	4	Hexagon screw	L = 38 MM LATE TYPE
71	941909	4	Spring washer	
72	940162	2	Hexagon screw	L = 38 MM
73	955535	4	Hexagon screw	L = 32 MM
74	942336	6	Spring washer	
75		1	Bracket	
76		1	Gasket	EARLY TYPE
77	952986	X	Hose	L = 130 MM SEE GROUP 2B
78	943482	2	Hose clamp	(951799) SEE GROUP 2B
79		X	CABLES AND CABLE TERMINALS	SEE GROUP 3
80	851766	1	Hose connection	(832846) SEE GROUP 4C
81	897824	1	Transport lock	FOR TRANSPORT.
82	944738	1	Plug	FOR TRANSPORT.
	875192	1	Gasket kit	SEE GROUP 10